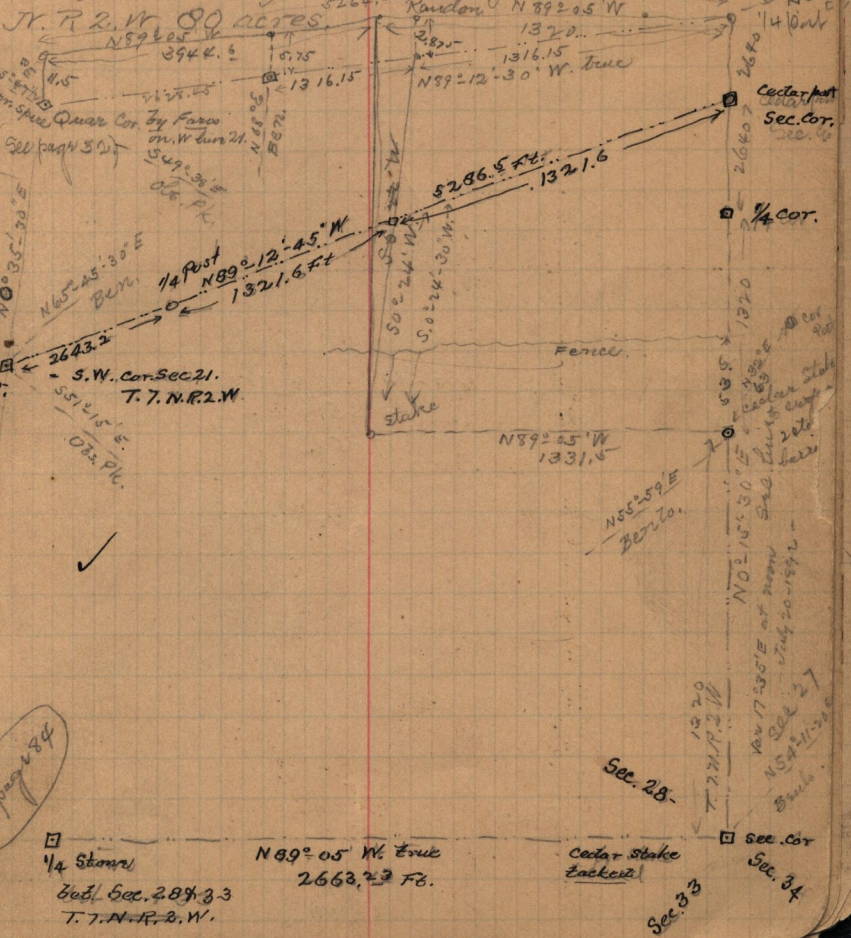


John England and Albert Miller } chairmen of } John England } 2nd day classes }  
 } } } Milo Sharp } } } 22nd }  
 Survey for John England July 21st 1892

N-572 - U. S. Patent to John England - April 15-1880,  
 for the S.E. 1/4 of the N.E. 1/4, and the N.E. 1/4 of the S.E. 1/4 of Sec 28  
 T. 7. N. R. 2. W. 80. acres, Homestead

1-616 - U. S. Patent to John England Jr. Oct 23-1890  
 for the N.E. 1/4 of the N.E. 1/4 Sec 28 T. 7. N. R. 2. W. - 40. a.

14-256 - Central Pacific Ry. to John England Jr  
 May 10-1892 - for the 1/2 of S.E. 1/4 Sec 21. T.



284

ORCE.

CE